

School of **Civil & Environmental Engineering - Graduate**
(Not including Engineering Management)
Post Graduate Activities Detail & History

This report presents information about the initial career paths taken by Civil & Environmental Engineering Graduate Level students from the Class of 2012. Historical data is provided to allow for comparison of activity and salary trends.

Number Graduated: 74

Number Responded: 35

Response Rate: 47%

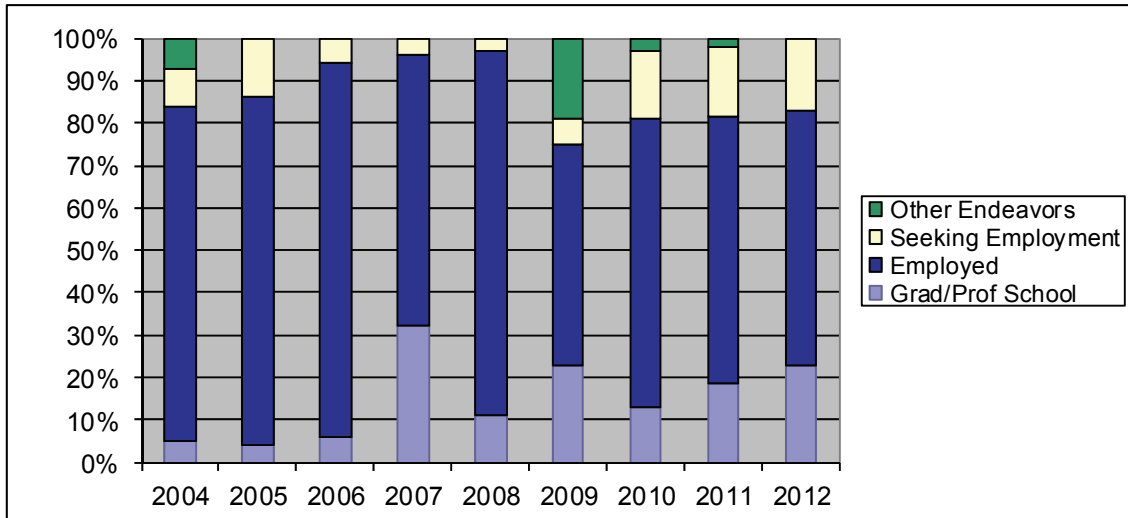
2012 Graduate and Professional Schools

Degree	Institution	Degree Pursued	Major
MENG	Cornell University	MPA	Public Affairs Management
MENG	Cornell University	PhD	Civil & Environ Engineering
MENG	Cornell University	PhD	Water Resource Systems
MENG	Lehigh University	PhD	Civil & Environ Engineering
MS	Clemson University	PhD	Automotive Engineering
MS	Cornell University	PhD	Civil Engineering
MS	Cornell University	PhD	Environmental Engineering
MS	Virginia Polytechnic Institute	PhD	Transportation Engineering

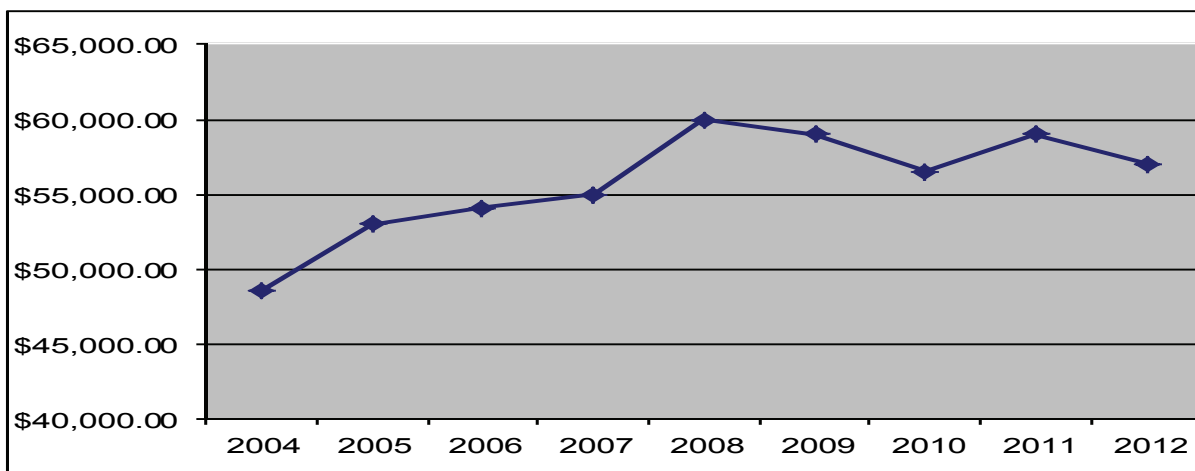
2012 Employment

Degree	Employer	Title	City	State/Country
MENG	Arup	Graduate Structural Engineer	Boston	MA
MENG	Delta Engineers, Architects & Land	Engineer	Endwell	NY
MENG	General Dynamics Electric Boat	Engineer I	New London	CT
MENG	Hardesty & Hanover, LLC	Structural Engineer	New York City	NY
MENG	Langan Engineering	Staff Environmental Engineer I	New York City	NY
MENG	Mueser Rutledge Consulting	Geotechnical Engineer	New York City	NY
MENG	Not Reported	Structural Engineer	Not Reported	
MENG	Parsons Brinckerhoff	Engineer I	New York City	NY
MENG	Port Authority of NY & NJ	Engineering Associate	New York City	NY
MENG	Robert Silman Associates	Structural Engineer (2)	New York City	NY
MENG	Roux Associates	Staff Engineer	Islandia	NY
MENG	Sam Schwartz Engineering	Transportation Engineering	New York City	NY
MENG	Simpson Gumpertz & Heger	Staff I—Structures	Waltham	MA
MENG	Woodard & Curran	Engineer I	White Plains	NY
MENG	WSP Cantor Seack	Engineer	New York City	NY
MS	Cornell University	Water Specialist	Ithaca	NY
MS	MAWH, Inc.	Associate Environmental Engineer	Los Angeles	CA
PhD	California Council on Science	Science Fellow in CA State Legislature	Sacramento	CA
PhD	Cornell University	Postdoctoral Associate	Ithaca	NY
PhD	Swiss Federal Institute	Postdoctoral Researcher	Lausanne	SWITZERLAND

Profile of Graduates 2004-2012



Median Starting Salaries for Master's Students 2004-2012



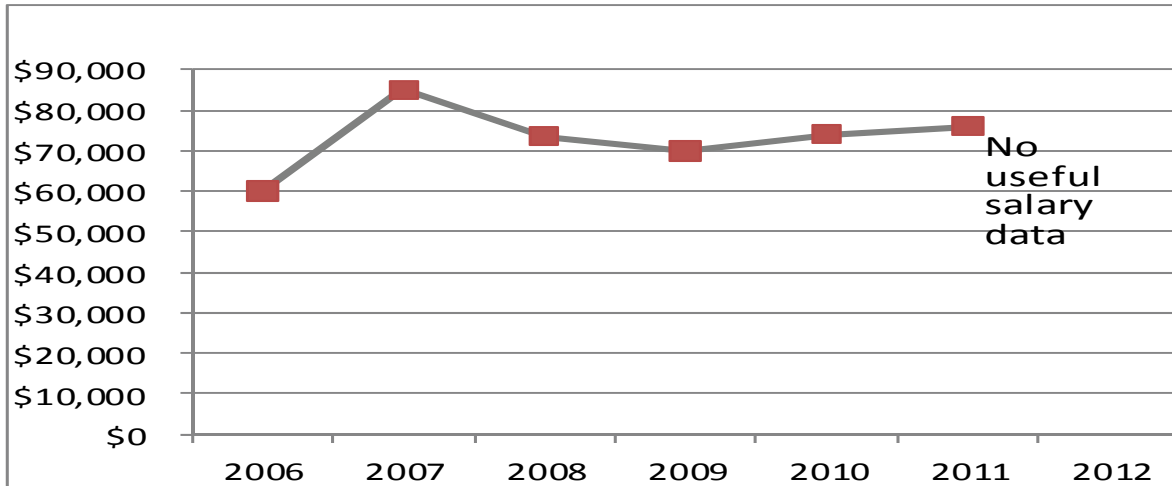
2012 **Mean** \$56,733 **Median** \$57,000 **High** \$64,900 **Low** \$44,000
 2011 **Mean** \$62,306 **Median** \$59,000 **High** \$95,000 **Low** \$48,000

Does not include part-time, post-doctoral, military, or non-US salaries.

Engineering Co-op & Career Services

201 Carpenter Hall 607-255-5006 eng-career@cornell.edu

Median Starting Salaries for PhD Students 2006-2012



2012 No useful salary data reported

2011 **Mean** \$93,000 **Median** \$76,000 **High** \$135,000 **Low** \$68,000

Does not include part-time, post-doctoral, military or non-US salaries.